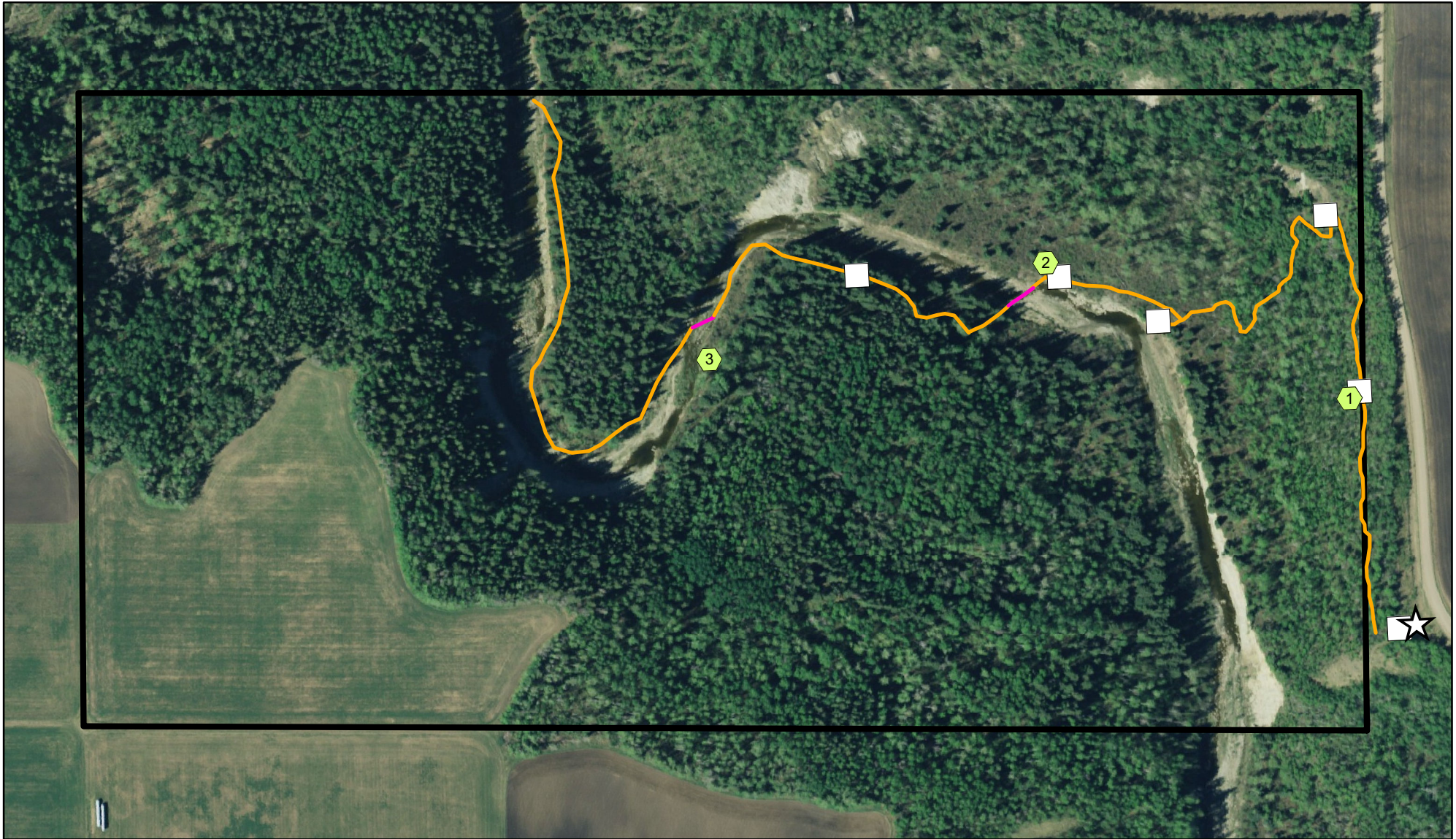


# Coates Trails and Geocaches



## Legend

-  Trails
-  Creek crossing
-  Parking
-  Signs
-  Boundary

 Geocaches

- 1) 12U E 303370 N 5911691 (I Saw the Sign)
- 2) 12U E 303183 N 5911786 (Walking with Dinosaurs)
- 3) 12U E 302967 N 5911736 (A Creek Runs Through It)

Trail is very steep with multiple sets of stairs.  
Exact foot access crossing location may vary  
and is only possible when water level is low.

0 50 100 200 Meters