

Get Involved!

EALT protects ecologically significant land which is important habitat for many butterfly species. Support EALT by:

Volunteering! Visit ealt.ca/volunteer or email info@ealt.ca to get started.

Donating! Visit ealt.ca/donate for more information.

Plant native flowers in your garden to benefit butterflies. You can obtain native flower seeds from the Edmonton Native Plant Group.

Passionate about identifying moths and butterflies? Join the Alberta Lepidopterists' Guild, visit <http://www.biology.ualberta.ca/uasm/alg/> for more information.

Sources

<http://www.butterfliesandmoths.org/>
<http://www.insectsofalberta.com/>

Contact Us

#101, 10471 – 178 Street
Edmonton, AB T5S 1R5
780-483-7578 | info@ealt.ca
ealt.ca | @EdAreaLandTrust



Butterfly Identification Guide

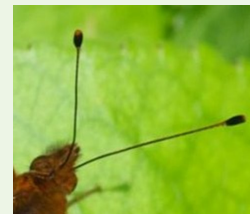


Introduction

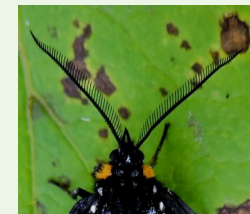
The Edmonton and Area Land Trust (EALT) is a non-profit organization dedicated to conserving the region's natural areas through community stewardship. We work towards an Edmonton region where natural area systems and their wildlife are valued and preserved for future generations.

On our conservation lands, it is common to see members of the Lepidoptera order, which includes butterflies and moths. These insects share many similarities such as a life cycle that includes larvae, pupae, and flying adult stages. They also play a key role in their ecosystem as pollinators.

The easiest way to tell the difference between these astonishing flying insects is to look at their antennae. If the antennae are thickened or club-like on the end, you are looking at a butterfly. If the antennae are feathered or thread-like, you have found a moth.



Butterfly Antennae



Moth Antennae

Once you have identified the species as a butterfly, use this guide to determine if it is one of these species, common to the Edmonton region and EALT natural areas.



Dorothy Monteith

Mandan Skipper

Carterocephalus palaemon mandan

Wing Span:

2.5 – 3.2 cm

Habitat: Openings in forests; moist meadows, and streamsides.

European Skipper

Thymelicus lineola

Wing Span:

2.5 – 2.9 cm

Habitat: Open grassy areas like meadows, pastures, road edges.

INTRODUCED SPECIES



Colleen Raymond



Colleen Raymond

Dreamy Duskywing

Erynnis icelus

Wing Span:

2.9 – 3.8 cm

Habitat: Woodland edges or openings.

Hobomok Skipper

Poanes hobomok

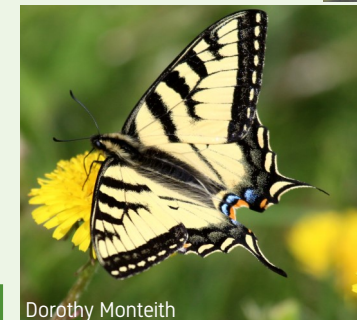
Wing Span:

2.5 – 4.3 cm

Habitat: Edges and openings of damp woods, bogs, along streams, and parks.



Colleen Raymond



Dorothy Monteith

Canadian Tiger Swallowtail

Papilio canadensis

Wing Span:

6.7 – 8 cm

Habitat: Deciduous and mixed woods and forest edges.

Cabbage White

Pieris rapae

Wing Span: 4.5-5.8 cm
Habitat: Open spaces including gardens, roadsides, cities, and suburbs.

INTRODUCED SPECIES



Dorothy Monteith



Colleen Raymond

Spring Azure

Celastrina ladon

Wing Span: 2.2 – 3.5 cm
Habitat: Wooded marshes and swamps; openings and edges of deciduous woods.

Mourning Cloak

Nymphalis antiopa

Wing Span: 5.7 – 10.1 cm
Habitat: Riparian areas, woods, and openings.



Greg Pohl



Colleen Raymond

Common Ringlet

Coenonympha tullia

Wing Span: 3.4 – 3.8 cm
Habitat: Grasslands, fields, and meadows.



Dorothy Monteith

Mustard White

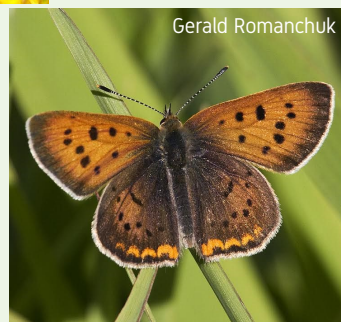
Pieris oleracea

Wing Span: 3.8 – 5.7 cm
Habitat: Open forests and fields, deciduous woods, bogs, and streamsides.

Purplish Copper

Lycaena helloides

Wing Span: 3-3.8 cm
Habitat: Meadows, marshes, streamsides and valleys.



Gerald Romanchuk



Colleen Raymond

Red-disked Alpine

Erebia discoidalis

Wing Span: 3.8 – 4.9 cm
Habitat: Open grassy bogs and other areas with acidic soils.

Satyr Anglewing

Polygonia satyrus

Wing Span: 4.5 – 6.4 cm
Habitat: Streams, wooded ravines, marshes, fields, openings and edges of moist woods.



Colleen Raymond

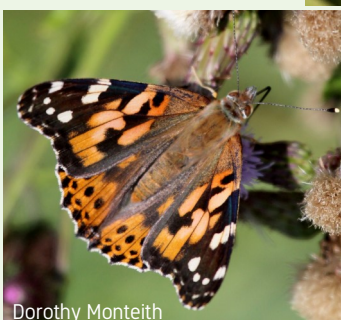
Western White

Pontia occidentalis

Wing Span: 3.8 – 6.3 cm
Habitat: Dry areas, fields, pastures, sandy areas, railroad beds, and roads.



Colleen Raymond



Dorothy Monteith

Painted Lady

Vanessa cardui

Wing Span: 5.1 – 7.3 cm
Habitat: Almost everywhere, especially in open or disturbed areas.

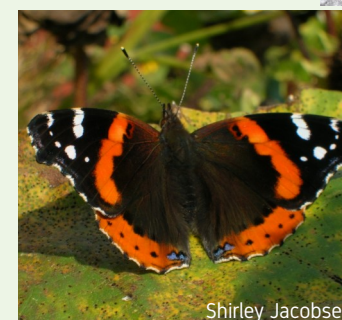
Common Alpine

Erebia epipsodea

Wing Span: 4.2 – 5.1 cm
Habitat: Moist open grassy fields, meadows, and open forests.



EALT



Shirley Jacobsen

Red Admiral

Vanessa atalanta

Wing Span: 4.5 – 7.6 cm
Habitat: Moist woods, parks, marshes, and fields.



Colleen Raymond

Dorcas Copper

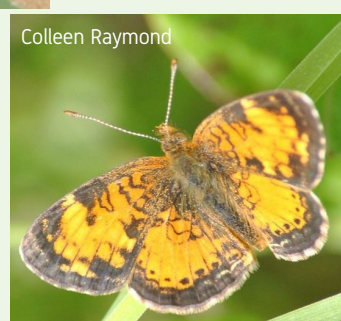
Lycaena dorcas

Wing Span: 2.5 – 3.2 cm
Habitat: Edges of bogs, old brushy fields, open places near small streams.

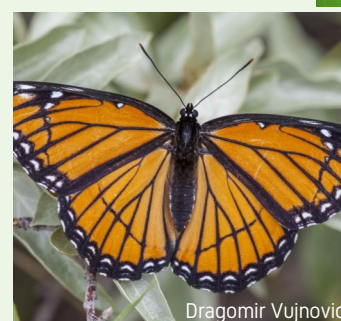
Northern Crescent

Phyciodes cocyta

Wing Span: 3.2-4.8 cm
Habitat: Moist open areas in rocky places, and wooded streams.



Colleen Raymond



Dragomir Vujnovic

Viceroy

Limenitis archippus

Wing Span: 6.3 – 8.6 cm
Habitat: Moist, open or shrubby areas such as lake and swamp edges, and wet meadows.



Colleen Raymond

Milbert's Tortoiseshell

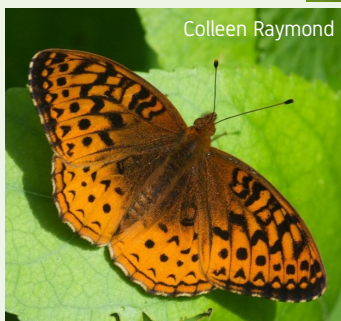
Aglais milberti

Wing Span: 4.2 – 6.3 cm
Habitat: Wet areas near woodlands; marshes and moist pastures.

Greenish Blue
Plebejus saepiolus
Wing Span: 2.5 – 3.2 cm
Habitat: Bogs, open fields, meadows, stream edges, and open forests.



EALT



Colleen Raymond

Atlantis Fritillary

Speyeria atlantis

Wing Span: 5-7 cm
Habitat: Meadows, bogs, forest openings, and upland pastures.

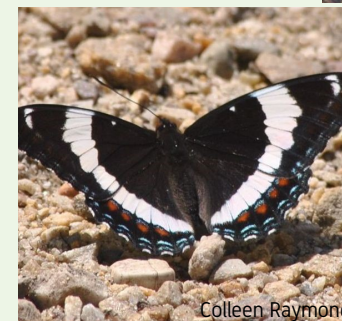
Common Wood-nymph

Cercyonis pegala

Wing Span: 4.5 – 7.6 cm
Habitat: Grassy areas, prairies, open meadows, bogs.



Colleen Raymond



Colleen Raymond

White Admiral

Limenitis arthemis

Wing Span: 5.7 – 10.1 cm
Habitat: Deciduous or mixedwood forests.